

Brewdog E Van Manual

Technical help – Stuart 07770 763805 or Laurence 07557941772

Access web page with manual and how to videos by using QR code below or use webpage <https://www.octane-junkies.co.uk/brewdog>

Or use QR code to access web page



Delivering / Collecting the Van

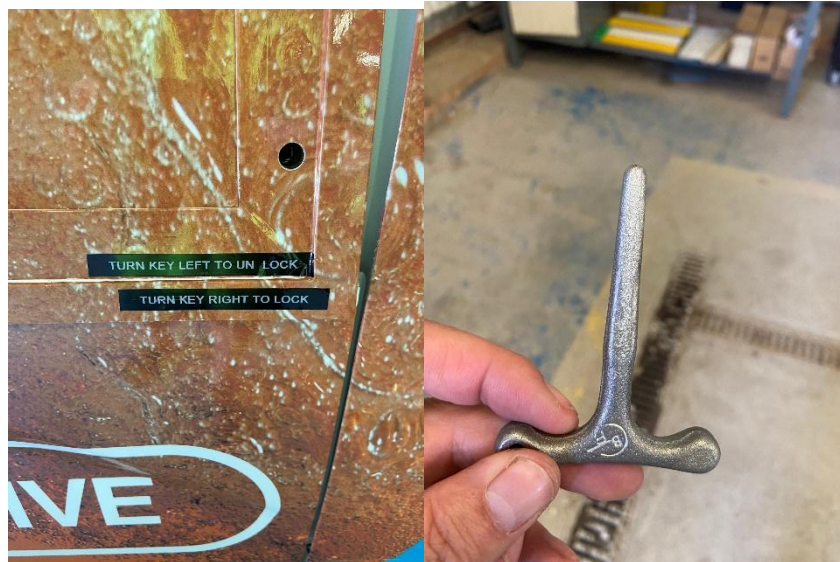
Before taking the van check the following ;

1. Make sure the driver deadlock bolt is in the “unlocked” position. Otherwise the bolt will prevent the door from opening and shutting properly. (this is accessed via the side sliding door and is on the left as you look in)



2. Make sure the Serving flap is shut and locked using the T bar key. Instructions on how flap works here.

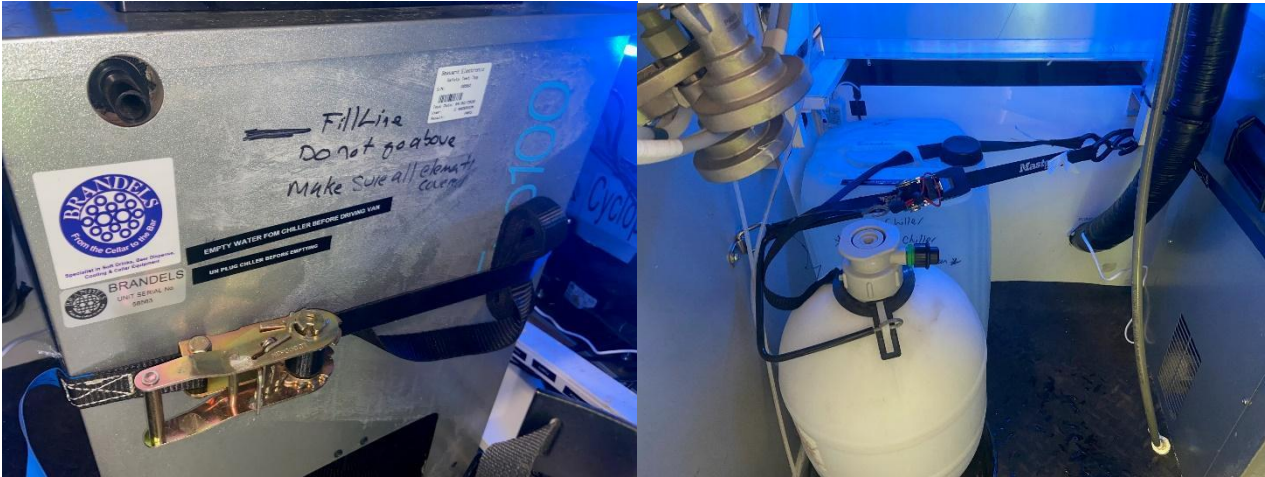
T bar key is attached to van key.



3. Make sure the following are in the storage container in the passenger foot well;
 - a. 2 x support struts for serving hatch
 - b. 2 x charging cables for van



4. Make sure the chiller water has been emptied into the 25l drum and that the drum is strapped into the back of the van. To check chiller has been emptied sufficiently please shine a light in the top of the chiller if the water isn't close to the top then this is fine. The 25ltr drum should have the water from the chiller in it. Chiller is emptied using a drill pump as per video instructions on website and instructions below.

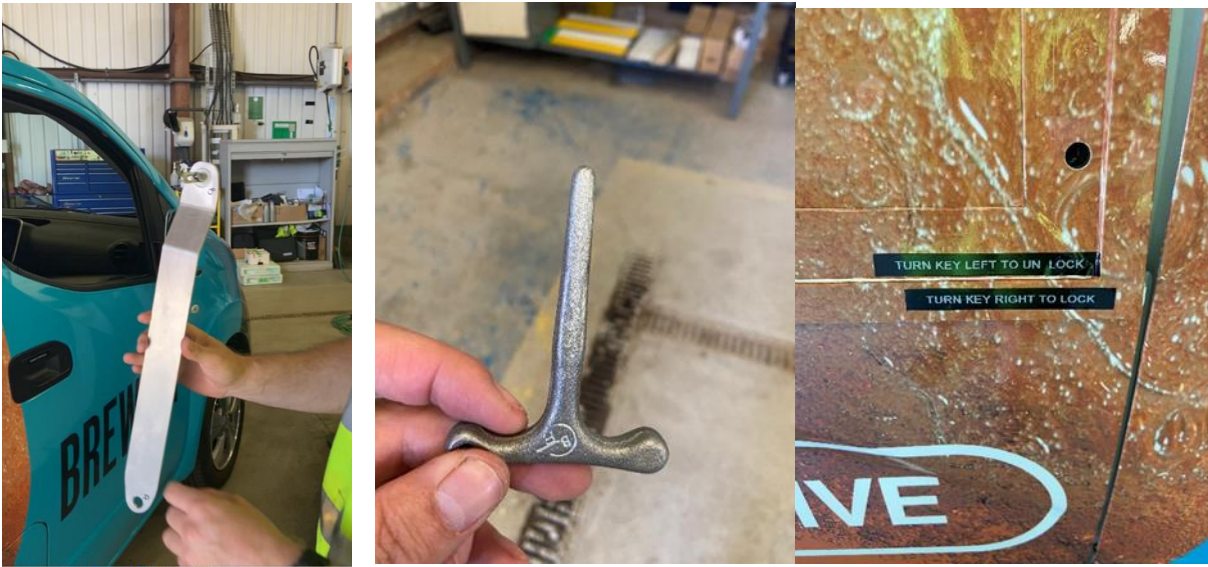


5. If chiller hasn't been emptied follow instructions below on how to turn van on and empty chiller.
6. Check fridge in rear of van is empty. If not Empty Fridge and lock fridge using key on key ring.



Setting up for Operating the Van

1. Open the side flap up and install bar straps as show in the instructions video. The flap is opened using the T bar to unlock the flap, you then lift the flap and install the strap bar/ hinges to keep the flap up. The bars are labelled as they need to go in a specific way round.



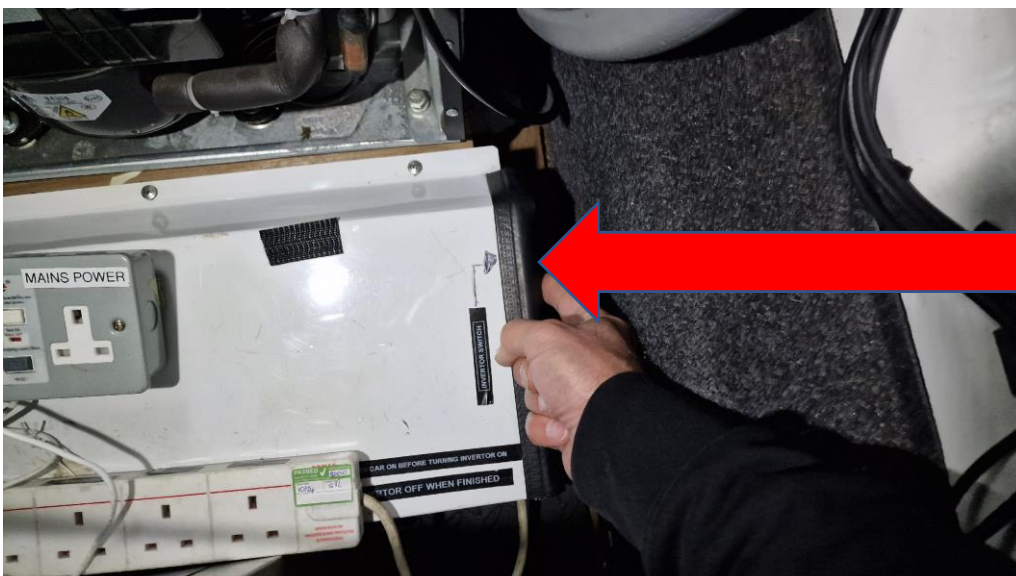
2. Turn Car on by pressing foot on the brake pedal and pressing the power button. (if you don't do this the invertor which powers the back of the van will not work)
3. Make sure chiller is switched off



4. Dead lock the driver door so no one can get in. (This is because the car can be driven when turned on and we need to make sure no member of the public access the driving cockpit.) The deadlock handle is just behind the drivers seat in the back part of the van and is labelled.



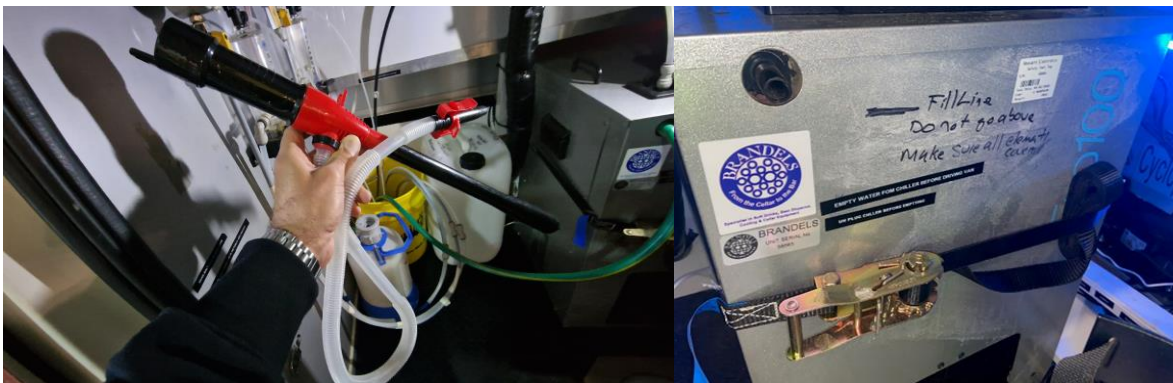
5. Turn the inverter on - The inverter is labelled and there is an arrow pointing to where the on / off switch is.



6. Take the lid off of the 25lt water drum in the van.



7. Fill the chiller with water from the drum using battery pump. Put the big end of the pump in drum and the small end in the chiller and turn on. It will take all 25ltrs in the drum. The green hose is an overflow in case of overfill and expansion of water when frozen. Either leave in yellow bucket or if outside have out of the side door. To empty chiller put the big end of the pump in the chiller small end in the drum.



Chiller Fill

Chiller Empty

8. When the chiller is full of water turn the chiller switch to on. If chiller makes rattling sounds , move it a bit and should stop.



9. Connect any usb required with content for the tv and turn TV on.

10. Set up bar lines as per normal bar – Connect Co2 , clean lines/ Connect Keg

Sound System Operation

1. Change the amp from transport position to play position.

Lift Amp to roof of van, lower back down and it will lock at 90 degrees



2. Turn Power on



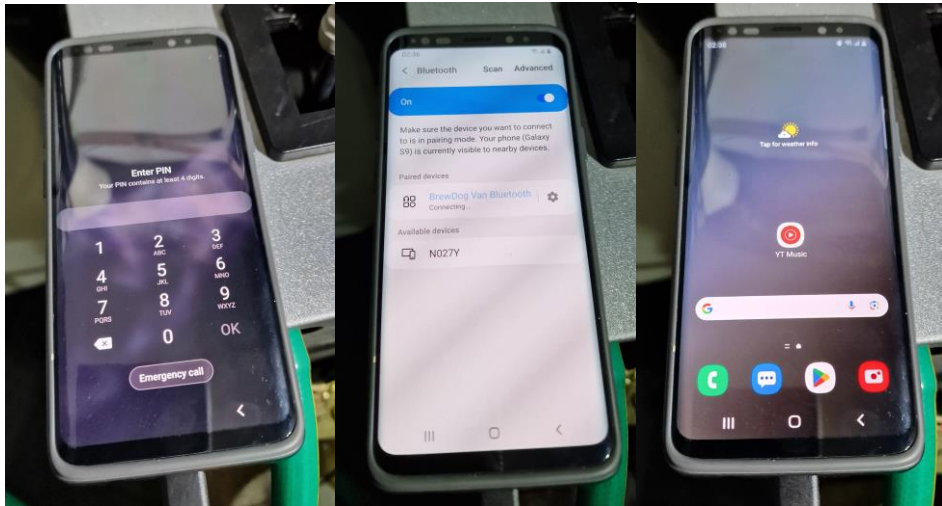
3. When the blue light flashes the amp is in pairing mode.



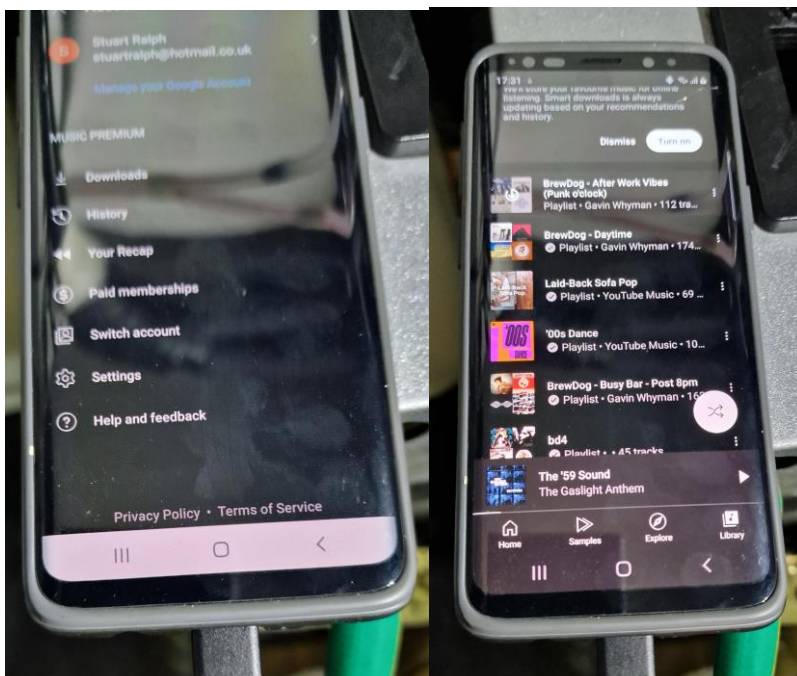
4. If you want to connect to the amp using your own phone. You can connect via bluetooth which will come up as “BrewDog van” in your bluetooth settings. If the music isn’t loud enough from your phone you can adjust the Amp volume using the Yamaha controller on the back wall.



5. We do have a phone in the glove box of the van with preloaded playlists in the glovebox of the van. The lock for the phone is 2023. Connect the phone to the Amp in Bluetooth settings. Then open YouTube music.



6. Go to downloads and there are various playlists including Brewdog bar playlists.



At end of serving / End of event;

1. Clean lines through (otherwise beer will spill into the van during transit and cause problems)
2. Empty Chiller into 25ltr drum until drum is nearly full
3. Remove kegs from van
4. Empty Fridge in back of van
5. Disconnect CO2 and remove co2 bottle

6. Wipe down bar area
7. Load assets back into the van
8. Close serving flap and lock it using t bar (put serving hatch straps in storage box in passenger footwell)
9. Turn invertor off
10. Un bolt driver door
11. Check battery state of car and arrange charging if needed
12. Turn car off
13. Lock Car